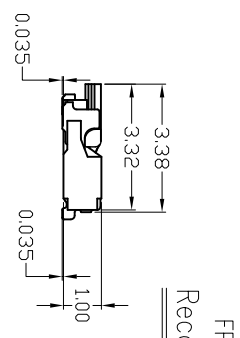
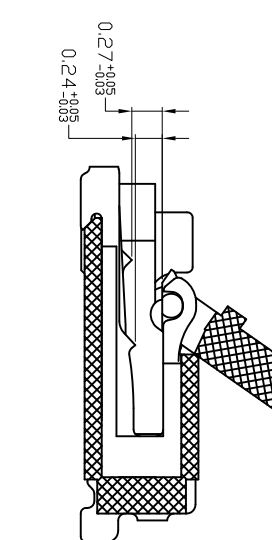
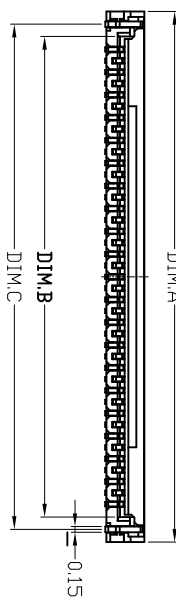
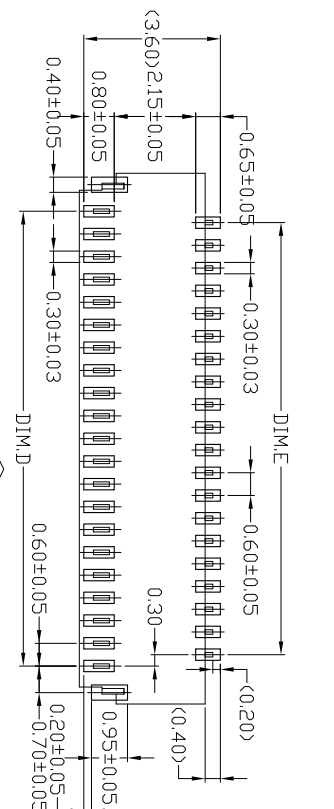
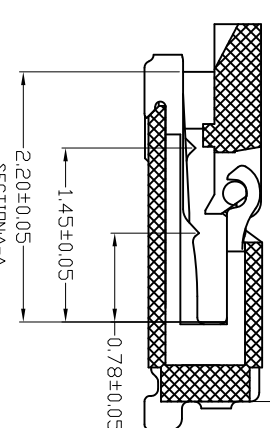
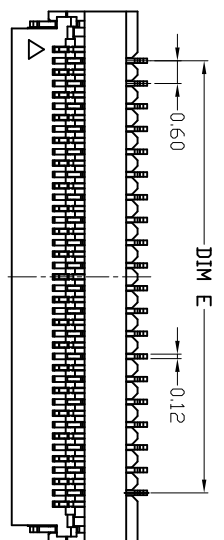


ROHS

14	13	12	11	10	9	8	7	6	5	4	3	2	1
REV	ECR NDL	DATE	SIGN	DESCRIPTION									
A		2017.06.28		NEW DRAWING									



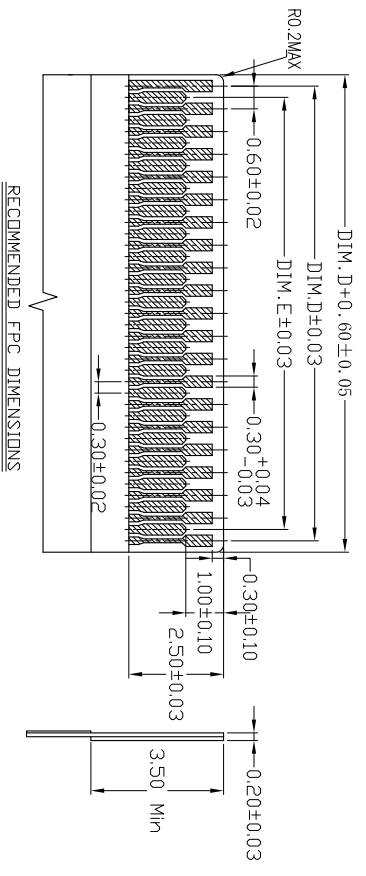
FPC/FCC Insert Direction
Recommended P.C.B Layout

Note:
1. Material
1.1: Housing: LCP UL94-V0
1.2: Actuator: LCP UL94-V0
1.3: Contact: C5210-SH
1.4: LEG: C5191-SH

2. Plating
2.1: Contact: Spot plating gold area
2.2: LEG: Matte Tin Plating Over All Nickel.

3. Rating:
3.1: Operating Voltage: 30V AC/DC.
3.2: Current Rating: 0.2A AC/DC.
3.3: Operating Temperature: -55°C~+85°C.

4. Pater Number:
FPC 03 20 - xx RL - TAX
Plating:G:Gold Flash
i:In.
TA: Tape Reel Packing
TU: Tape Packing
Right Angle/Lower Contact Type
NO. of Contacts
Service Number
Pitch=0.30
FPC Service



TOLERANCE UNLESS SPECIFIED

LINEAR	ANGLE
X ±0.25	X° ±5°
XX ±0.20	X° ±3°
XXX ±0.10	XX°

DATE 2014.08.30

DAR. BY

CHK. BY

MATERIAL

FINISH

KJCONNECTORS

众鸣精密工业（深圳）有限公司

TITLE: FPC 0.3Pitch 1.0H掀盖式 connector.

众鸣连接器
TEL: +86-13590178542
Email: kjzmlucy@aliyun.com
www.zmconnector.com

Number of Contacts	Dimension				
	A	B	C	D	E
13	5.60	4.28	4.93	3.60	3.00
15	6.20	4.88	5.53	4.20	3.60
17	6.80	5.48	6.13	4.80	4.20
19	7.40	6.08	6.73	5.40	4.80
21	8.00	6.68	7.33	6.00	5.40
23	8.60	7.28	7.93	6.60	6.00
25	9.20	7.88	8.53	7.20	6.60
27	9.80	8.48	9.13	7.80	7.20
29	10.40	9.08	9.73	8.40	7.80
31	11.00	9.68	10.33	9.00	8.40
33	11.60	10.28	10.93	9.60	9.00
35	12.20	10.88	11.53	10.20	9.60
37	12.80	11.48	12.13	10.80	10.20
39	13.40	12.08	12.73	11.40	10.80
41	14.00	12.68	13.33	12.00	11.40
43	14.60	13.28	13.93	12.60	12.00
45	15.20	13.88	14.53	13.20	12.60
47	15.80	14.48	15.13	13.80	13.20
49	16.40	15.08	15.73	14.40	13.80
51	17.00	15.68	16.33	15.00	14.40
53	17.60	16.28	16.93	15.60	15.00
55	18.20	16.88	17.53	16.20	15.60
57	18.80	17.48	18.13	16.80	16.20
59	19.40	18.08	18.73	17.40	16.80
61	20.00	18.68	19.33	18.00	17.40
63	20.60	19.28	19.93	18.60	18.00
65	21.20	19.88	20.53	19.20	18.60
67	21.80	20.48	21.13	19.80	19.20
69	22.40	21.08	21.73	20.40	19.80
71	23.00	21.68	22.33	21.00	20.40
73	23.60	22.28	22.93	21.60	21.00

14	13	12	11	10	9	8	7	6	5	4	3	2	1
TOLERANCE UNLESS SPECIFIED										DATE 2014.08.30		DAR. BY	
LINEAR										SCALE 1/1		CHK. BY	
ANGLE										UNIT MM		APP. BY	
X ±0.25										X° ±5°		DWG NDL	
XX ±0.20										X° ±3°			
XXX ±0.10										XX°			
TEL: +86-13590178542										MATERIAL		FINISH	
Email: kjzmlucy@aliyun.com										FPC Service		KJCONNECTORS	
www.zmconnector.com										Pitch=0.30		众鸣精密工业（深圳）有限公司	
										TITLE: FPC 0.3Pitch 1.0H掀盖式 connector.		REV. A	
										DVG NDL		FPC0320-xxRL-TAG	