

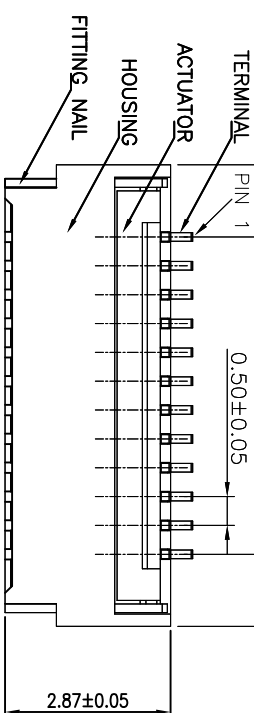
# ROHS

A±0.15

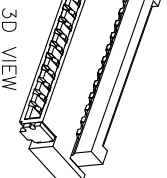
B±0.10

0.50±0.05

2.87±0.05

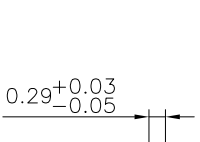


ACTUATOR  
HOUSING  
FITTING NAIL



1.35±0.03

0.43±0.03



0.29±0.1

0.09±0.01

0.09±0.01

0.09±0.01

0.09±0.01

0.09±0.01

0.09±0.01

0.09±0.01

0.09±0.01

0.09±0.01

0.09±0.01

0.09±0.01

0.09±0.01

0.09±0.01

0.09±0.01

0.09±0.01

0.09±0.01

0.09±0.01

0.09±0.01

0.09±0.01

0.09±0.01

0.09±0.01

0.09±0.01

0.09±0.01

0.09±0.01

0.09±0.01

0.09±0.01

0.09±0.01

0.09±0.01

0.09±0.01

0.09±0.01

0.09±0.01

0.09±0.01

0.09±0.01

0.09±0.01

0.09±0.01

0.09±0.01

0.09±0.01

0.09±0.01

0.09±0.01

0.09±0.01

0.09±0.01

0.09±0.01

NOTES:

1. MATERIAL:

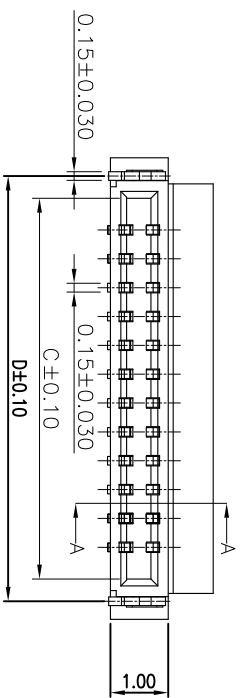
HOUSING: HIGHT-TEMP PLASTIC,UL 94-V0,COLOR:NATURE;  
COVER: HIGHT-TEMP PLASTIC,UL 94-V0,COLOR:BLACK;  
Plastic material: LCP 473i Rear cover material: LCP 70T45B

2. PLATING:

CONTACT: GOLD OR TIN PLATED ON NICKEL OVERALL.  
LEG: TIN PLATED ON NICKEL OVERALL.

3. RATING:

CURRENT RATING: 0.5A AC/DC  
VOLTAGE RATING: 25V AC/DC  
TEMPERATURE RANGE: -25°C~+85°C;



0.15±0.030

0.15±0.030

0.15±0.030

0.15±0.030

0.15±0.030

0.15±0.030

0.15±0.030

0.15±0.030

0.15±0.030

0.15±0.030

0.15±0.030

0.15±0.030

0.15±0.030

0.15±0.030

0.15±0.030

0.15±0.030

0.15±0.030

0.15±0.030

0.15±0.030

0.15±0.030

0.15±0.030

0.15±0.030

0.15±0.030

0.15±0.030

0.15±0.030

0.15±0.030

0.15±0.030

0.15±0.030

0.15±0.030

0.15±0.030

0.15±0.030

0.15±0.030

0.15±0.030

0.15±0.030

0.15±0.030

B±0.05

0.5±0.05

0.3±0.05

0.94

3.30±0.05

0.80±0.05

0.8±0.05

0.94

0.5±0.05

0.3±0.05

0.94

0.5±0.05

0.3±0.05

0.94

0.5±0.05

0.3±0.05

0.94

0.5±0.05

0.3±0.05

0.94

0.5±0.05

0.3±0.05

0.94

0.5±0.05

0.3±0.05

0.94

(B+1.0)±0.05

B±0.05

1.50±0.05

0.50±0.05

0.3±0.03

0.50±0.05

0.3±0.03

0.50±0.05

0.3±0.03

0.50±0.05

0.3±0.03

0.50±0.05

0.3±0.03

0.50±0.05

0.3±0.03

0.50±0.05

0.3±0.03

0.50±0.05

0.3±0.03

0.50±0.05

0.3±0.03

0.50±0.05

0.3±0.03

0.50±0.05

0.3±0.03

0.50±0.05

APPLICABLE FPC DIMENSION(REF)  
(THICKNESS 0.30±0.03)

PIN	A	B	C	D	PIN	A	B	C	D
4	4.00	1.50	2.60	3.38	33	18.50	16.00	17.10	17.88
5	4.50	2.00	3.10	3.88	34	19.00	16.50	17.60	18.38
6	5.00	2.50	3.60	4.38	35	19.50	17.00	18.10	18.88
7	5.50	3.00	4.10	4.88	36	20.00	17.50	18.60	19.38
8	6.00	3.50	4.60	5.38	37	20.50	18.00	19.10	19.88
9	6.50	4.00	5.10	5.88	38	21.00	18.50	19.60	20.38
10	7.00	4.50	5.60	6.38	39	21.50	19.00	20.10	20.88
11	7.50	5.00	6.10	6.88	40	22.00	19.50	20.60	21.38
12	8.00	5.50	6.60	7.38	41	22.50	20.00	21.10	21.88
13	8.50	6.00	7.10	7.88	42	23.00	20.50	21.60	22.38
14	9.00	6.50	7.60	8.38	43	23.50	21.00	22.10	22.88
15	9.50	7.00	8.10	8.88	44	24.00	21.50	22.60	23.38
16	10.00	7.50	8.60	9.38	45	24.50	22.00	23.10	23.88
17	10.50	8.00	9.10	9.88	46	25.00	22.50	23.60	24.38
18	11.00	8.50	9.60	10.38	47	25.50	23.00	24.10	24.88
19	11.50	9.00	10.10	10.88	48	26.00	23.50	24.60	25.38
20	12.00	9.50	10.60	11.38	49	26.50	24.00	25.10	25.88
21	12.50	10.00	11.10	11.88	50	27.00	24.50	25.60	26.38
22	13.00	10.50	11.60	12.38	51	27.50	25.00	26.10	26.88
23	13.50	11.00	12.10	12.88	52	28.00	25.50	26.60	27.38
24	14.00	11.50	12.60	13.38	53	28.50	26.00	27.10	27.88
25	14.50	12.00	13.10	13.88	54	29.00	26.50	27.60	28.38
26	15.00	12.50	13.60	14.38	55	29.50	27.00	28.10	28.88
27	15.50	13.00	14.10	14.88	56	30.00	27.50	28.60	29.38
28	16.00	13.50	14.60	15.38	57	30.50	28.00	29.10	29.88
29	16.50	14.00	15.10	15.88	58	31.00	28.50	29.60	30.38
30	17.00	14.50	15.60	16.38	59	31.50	29.00	30.10	30.88
31	17.50	15.00	16.10	16.88	60	32.00	29.50	30.60	31.38
32	18.00	15.50	16.60	17.38					

RECOMMENDED PCB LAYOUT  
TOLERANCE±0.05  
(N=CIRCUITS)

TOLERANCE UNLESS SPECIFIED  
LINEAR ANGLE  
X ±0.15 X' ±2°  
.XX ±0.10 X' ±2°  
.XXX ±0.05 .XX' ±--

**众鸣连接器**  
Tel:+86-13590178542  
Email: kizmilucy@aliyun.com  
www.zmconnector.com

14	13	12	11	10	9	8	7	6	5	4	3	2	1
----	----	----	----	----	---	---	---	---	---	---	---	---	---

**KJCONNECTORS** ZHONGMING NIGETY INDUSTRY(SHENZHEN)CO.,LTD

TITLE: FPC 0.5Pitch 1.0H前置插板  
DWG NO. FPC0510-B-xxRL-TAG